

Job Name/Location:

Tag #:

Date:

For:  File  Resubmit

PO No.:

Approval  Other \_\_\_\_\_

Architect:

GC:

Engr:

Mech:

Rep:

(Company)

(Project Manager)

# PMBD3630 3-Port Branch Distribution Unit (BD Unit)



### Performance:

Max Nominal Port Capacity Btu/h (each port)	18,000
Max Nominal Unit Capacity Btu/h (sum of ports)	54,000
Power Input (W)	10

### Electrical:

Power Supply (V <sup>l</sup> /Hz/∅)	208-230/60/1
Rated Amps (A)	0.1

### Piping:

#### Piping Connection to Outdoor Unit:

Liquid Line (in, OD)	3/8
Vapor Line (in, OD)	3/4

#### Piping Connection to Indoor Unit:

Liquid Line (in, OD)	1/4 (Qty 3)
Vapor Line (in, OD)	3/8 (Qty 3)

### Standard Features:

- Distributes refrigerant to indoor units
- Internal components are insulated
- Flare joints provided for easy installation
- Compact design

### Unit Data:

Net Weight (lbs)	15
Shipping Weight (lbs)	17

### Notes:

1. Acceptable operating voltage: 187V-253V.
2. All communication cable to be minimum 16 AWG from the outdoor unit to the BD unit and 18 AWG from the BD unit to the indoor unit.
3. All communication cable to be 2-conductor, stranded, shielded and must comply with applicable local and national code.
4. Piping lengths:
  - Maximum height difference between BD unit and indoor units - 32.8 ft
  - Maximum height difference between BD unit and BD unit - 49.2 ft
  - Maximum piping length between BD unit and indoor units - 49.2 ft
5. The BD unit should be installed inside of a building.
6. Must follow installation instructions in the applicable LG installation manual.
7. Power wiring cable size must comply with the applicable local and national code.

**PMBD3630**

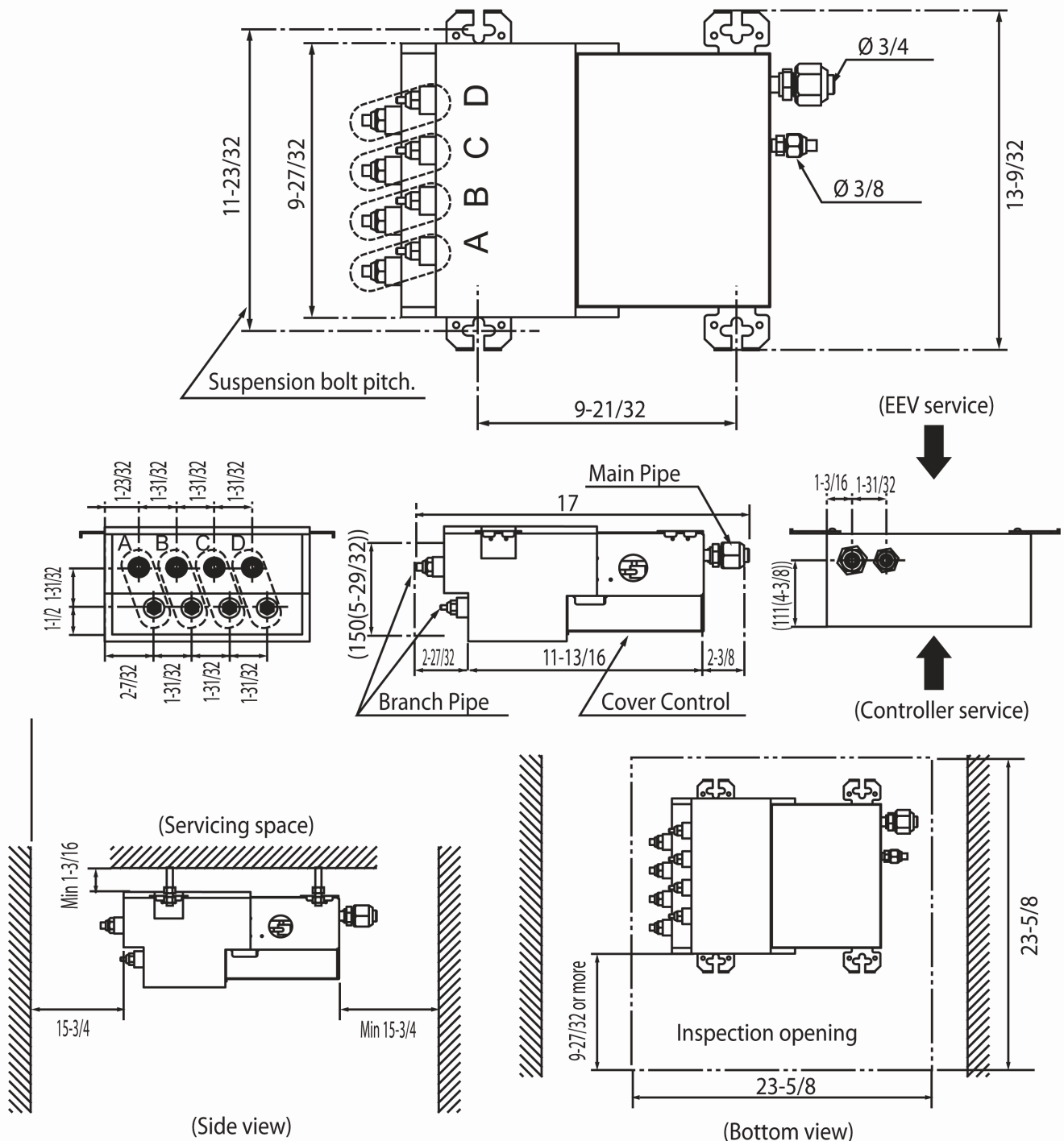
3-Port Branch Distribution Unit (BD Unit)



Tag #:

Date:

PO No.:



Unit: inch

**Notes**

1. For PMBD3620 unit, ports A & B are available.
2. For PMBD3630 unit, ports A, B & C are available.
3. For PMBD3640 unit, ports A, B, C & D are available.