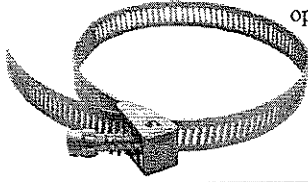


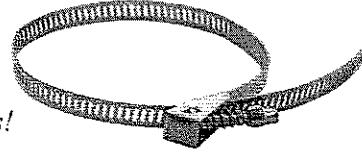
**QUICK RELEASE 500/550 SERIES**

These clamps feature a unique quick release design between the one piece housing and band allowing for quick and easy installation in restricted or difficult areas.

**Applications:** Quick release action permits easy installation in applications where clamp must be opened to be applied. Quick release clamps are used extensively in the telecommunications industry on cable enclosures where open air application demands durability.



Open/Close design allows easy installation.



*Send Midland all your high volume quotes!*

**500 Series**

- 5/16" Hex Slotted Carbon Steel Screw
- 1/2" 301 Stainless Steel band
- 301 Stainless Steel Housing
- 410 Stainless Steel Bridge

**550 Series**

- 5/16" Hex Slotted 410 Stainless Steel Screw
- 1/2" 301 Stainless Steel band
- 301 Stainless Steel Housing
- 410 Stainless Steel Bridge

#	Dia. Range		Part #	List Price	Part #	List Price
	Min.	Max.				
12	1/2"	1-1/4"	500-012 <sup>s</sup>	2.19	550-012 <sup>s</sup>	2.96
20	3/4"	1-3/4"	500-020 <sup>s</sup>	2.23	550-020 <sup>s</sup>	2.35
28	1"	2-1/4"	500-028 <sup>s</sup>	2.28	550-028 <sup>s</sup>	2.53
36	1"	2-3/4"	500-036 <sup>s</sup>	1.73	550-036 <sup>s</sup>	2.62
48	1-1/2"	3-1/2"	500-048 <sup>s</sup>	2.91	550-048 <sup>s</sup>	3.10
56	1"	4"	500-056 <sup>s</sup>	3.32	550-056 <sup>s</sup>	4.50
72	2"	5"	500-072 <sup>s</sup>	2.80	550-072 <sup>s</sup>	5.18
88	2-1/16"	6"	500-088 <sup>s</sup>	4.16	550-088 <sup>s</sup>	4.95
104	1-3/4"	7"	500-104 <sup>s</sup>	4.38	550-104 <sup>s</sup>	6.32
128	1-3/4"	8-9/16"	500-128 <sup>s</sup>	3.89	550-128 <sup>s</sup>	5.57
152	2"	10"	500-152 <sup>s</sup>	4.12	550-152 <sup>s</sup>	6.05
188	2-1/16"	12-5/16"	500-188 <sup>s</sup>	4.58	550-188 <sup>s</sup>	7.72
216	10-3/16"	14"	500-216 <sup>s</sup>	4.94	550-216 <sup>s</sup>	9.30
248	10-3/4"	16"	500-248 <sup>s</sup>	5.20	550-248 <sup>s</sup>	8.59
280	14-1/4"	18"	500-280 <sup>s</sup>	6.17	550-280 <sup>s</sup>	8.25
312	14"	20"			550-312 <sup>s</sup>	9.80

**CLAMPS**

The tragedy of life doesn't lie in not reaching your goal. The tragedy lies in having no goals to reach.

**- Benjamin Mays**

<sup>s</sup> Also stocked in Atlanta  
(See page Intro II for details)