

SUBMITTAL RECORD

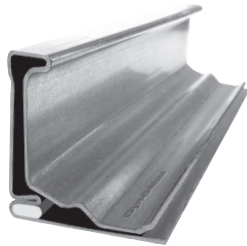
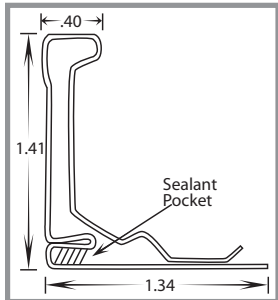
JOB _____
 LOCATION _____
 SUBMITTED TO _____
 SUBMITTAL PREPARED BY _____
 APPROVED BY _____
 DATE _____



**Submittal Form
 FLANGE**

**SEALANT POCKET
 FOR ALL FLANGE**
 Flame Spread - 5
 Smoke Density - 0
 Fuel Contribution - 0
 Life Expectancy - 20yr minimum

J Flange

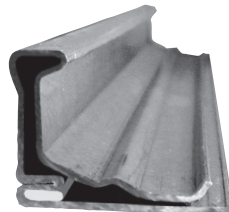
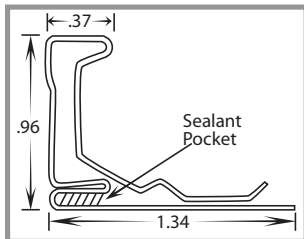


DOMJ Flange

- Designed to strengthen the duct wall and connect duct sections together.
- Furnished with an integrated sealant pocket for a secure air tight fit.
- Manufactured from 20-gauge steel in 10ft., 12ft. & 20ft. lengths.
- DOMJ is designed for large commercial and high-pressure applications.
- Bundles of 20ft. lengths available only with a Full Truckload order.
- Specialty metal available upon request.

Item #	Code	Description
21230	DOMJ20	J Flange -20ft.
21236	DOMJ20SS	Stainless Steel J Flange -20ft.
21238	DOMJ20AL	Aluminum J Flange -20ft.
21234	DOMJ12	J Flange-12ft.
21233	DOMJ10	J Flange-10ft.

H Flange

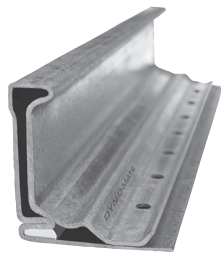
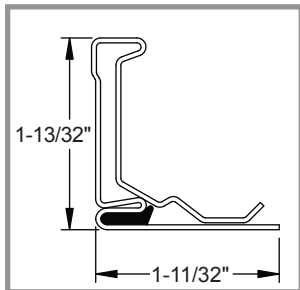


DOMH Flange

- Designed to strengthen the duct wall and connect duct sections together.
- Furnished with an integrated sealant pocket for a secure air tight fit.
- Manufactured from 22-gauge steel in both 12ft. & 20ft. lengths.
- DOMH is designed for low to medium pressure or residential applications.
- Bundles of 20ft. lengths available only with a Full Truckload order.
- Specialty metal available upon request.

Item #	Code	Description
21231	DOMH20	H Flange-20ft.
21235	DOMH12	H Flange -12ft.

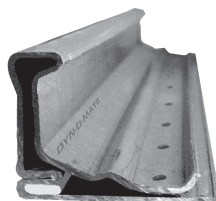
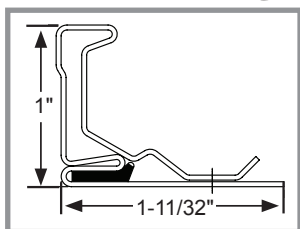
J Speed Flange



Speed Flange

- Installation in half the time as conventional flange.
- Designed to strengthen the duct wall and connect duct sections together.
- Furnished with an integrated butyl sealant pocket for a secure air tight fit.
- Manufactured in 10ft., 12ft. & 20ft. lengths.
- Available in J Style (20 gauge) for large commercial and high-pressure applications and H Style (22 gauge) for low to medium pressure or residential applications.
- Bundles of 20ft. lengths available only with a Full Truckload order.
- Specialty metal available upon request.

H Speed Flange



Item #	Code	Description
21001	SFJ10	Speed Flange J Style 10' bundle
21002	SFJ12	Speed Flange J Style 12' bundle
21003	SFJ20	Speed Flange J Style 20' bundle
21004	SFH10	Speed Flange H Style 10' bundle
21005	SFH12	Speed Flange H Style 12' bundle
21006	SFH20	Speed Flange H Style 20' bundle

Duro Dyne East Division, Bay Shore, NY
 Duro Dyne Midwest Division, Fairfield, OH
 Duro Dyne West Division, Fontana, CA
 Duro Dyne Canada, Lachine, Quebec, Canada

631-249-9000 Fax: 631-249-8346
 513-870-6000 Fax: 513-870-6005
 562-926-1774 Fax: 562-926-5778
 514-422-9760 Fax: 514-636-0328

www.durodyne.com E-mail: durodyne@durodyne.com



©2014 Duro Dyne Corporation
 Printed in USA 3/14
 BO050005