

THE SOURCE FOR INSULATION FASTENING

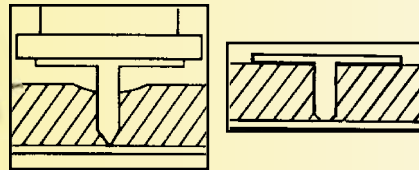
**DURO
DYNE**



WELD TYPE FASTENERS

RIB PIN® (CP); TARGET PINS; SLOPE PINS; ECONO POINT (FTC) & (BDEP)

Econo Point FTC weld pins utilize a specially pointed nail to assure uniform welding. Duro Dyne Welding Rib Pins (CP) have dished washers, ribbed nails for faster cooling and precision points to assure uniform quality. BDEP and CTC pins have unique washers designed to improve the quilting contour of the insulation surface. All style pins are used with MF, PBF, FG, RH, and FGMH pinspotters.



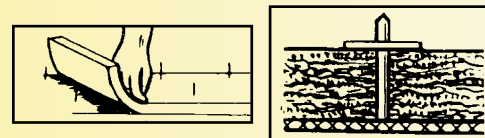
The needle sharp point enables the operator of the machine to easily push the weld pin through the insulation into firm electrical contact with the metal duct.

Welding current is supplied by activating the weld transformers. Current flowing through the pin's point of contact creates instantaneous welds of extremely high strength.

All Pins available in 1/2", 3/4", 1", 1-1/8", 1-1/2", 2", & 2-1/8" lengths.

SPOTTER PIN (PN & LN)

The spotter pin is welded to the sheet metal and the insulation is impaled over the nail. It is held in place with the addition of either metal or nylon washers. PC (metal) and NC (nylon) washers are used with PN's. LC (metal) and NC-2 (nylon) for LN's. Pins can be installed with all DYN-O-LITE, LF, MF and PBF Pinspotters.



After the pins are welded to the duct, (1 pin per sq. ft.), press the insulation onto the pins. Pins used should be 1/4" longer than the insulation thickness. Push clip over pin to hold insulation firmly in place.

PN Pins available in 3/4", 1-1/4", 2", 2-1/2".

LN Pins available in 3/4", 1-1/2", 2-1/2", 3-1/2", 4-1/2", 5-1/2".

GOLD SEAL PINS

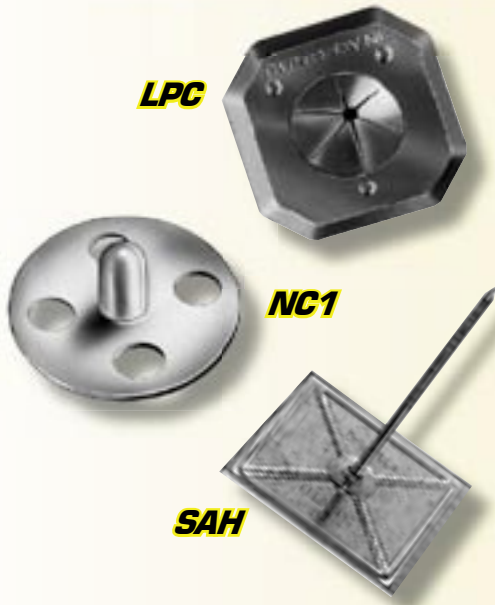
SELF SEALING PIN (SSP)

Gold Seal Pins hold the duct liner in place and seal the hole. Heat activated gold adhesive on the underside of the washer secures the pin to the liner facing during the welding process.



- Adhesive coating insulates the underside of the washer to allow welding on foil faced insulation.
- Gold Seal Pins also feature "dished washers" and lathe cut points to insure consistent penetration of duct liner.
- Gold Seal Pins are designed for use with all MF, PBF, FG, RH, and FGMH Multihead pinspotters.
- Gold Seal Pins available in 1/2", 3/4", 1" and 2" lengths.

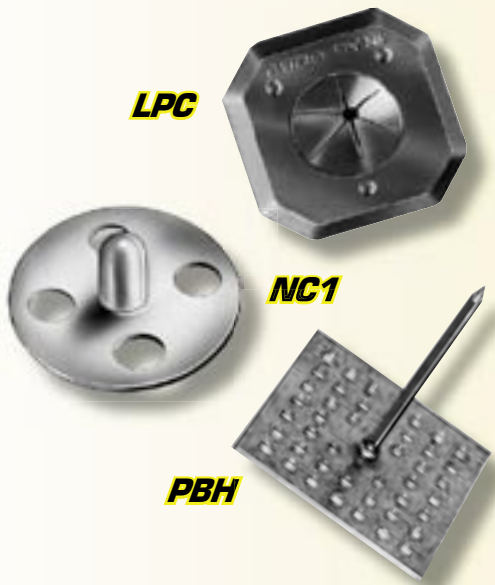
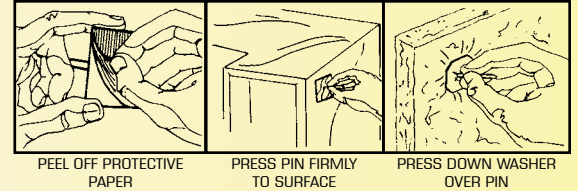
MECHANICAL TYPE FASTENERS



DYNASTICK® SELF ADHESIVE INSULATION HANGER

SAH Dynastick is an insulation hanger with a self-stick base. Just peel the release paper from the hanger base and firmly press the base to the clean duct surface. Impale the insulation over the hanger nail and slip on the locking washer. Self-stick hangers adhere to clean metal surfaces and withstand temperatures of up to 175°F.

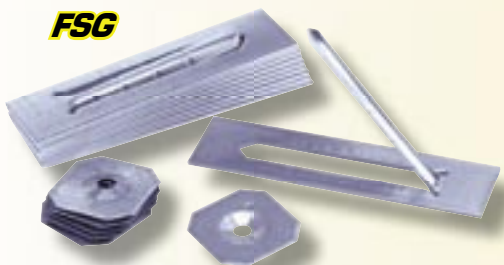
Available in 3/4",
1-1/4", 1-3/4", 2",
& 2-1/2" lengths.



DYNASTICK® INSULATION HANGER

PBH Dynastick is a perforated base hanger for use with super strength PBA mastic. Simply place a small amount of PBA on a perforated base and firmly press hanger against the duct surface. Impale the insulation over the hanger nail and slip on a locking washer. Duro Dyne PBA adheres to concrete, metal or wood surfaces and withstands constant temperatures up to 180°F.

Available in 3/4",
1-1/4", 1-3/4", 2",
& 2-1/2" lengths.



PATENT #5,325,964

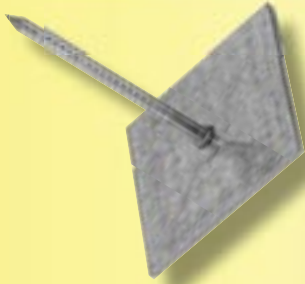
FLIPSTIX®

SELF ADHESIVE INSULATION HANGER WITH THE UNIQUE "ONE PIECE" DESIGN

A unique insulation hanger with a self stick base. One fastener can be used for insulation up to 2" thick. Optional extension extends use for up to 6" thick insulation or wrap. It is the only fastener available in galvanized, aluminum and stainless steel.

Insulation can be secured simply by bending the tip of the extended pin or using supplied washers. Flipstix can be used on any clean metal or painted surface and will withstand temperatures of up to 175°F.

MECHANICAL TYPE FASTENERS



STIK-TAC

SELF-ADHESIVE INSULATION FASTENER Available in 1-3/4" & 2-1/2" lengths.

Stik-Tac Insulation fasteners are an economical solution to self-stick insulation needs. Stik-Tacs have a 1-3/8 inch square base and high strength acrylic foam tape for superior holding power. Just peel off the protective backing and firmly press the base on to the cleaned duct surface. To complete the installation impale the insulation on the nail and secure with an LPC steel or NC1 nylon washer. Withstand temperatures up to 175 degrees F.



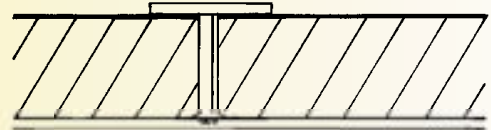
BANGER

IMPACT DRIVEN FASTENERS

Easy to install - place the liner over the sheet metal and drive the banger through the insulation. Upon impact, the jaws (three on the Tripod® for added stability, two on the standard Banger), of the fastener penetrate the metal and lock securely within the thickness of the metal itself. (Always place a hardened steel block behind the sheet metal at the point of impact). Bangers can be installed with model DHH Double Headed Hammer or AB-5 Automatic Banger Setter.

**BG IS AVAILABLE IN
1/2" & 1"**

**TBG IS AVAILABLE IN 1/2" &
1", 1-1/8", & 1-1/2"**



ADHESIVE APPLICATORS



SUPER SPRAYFAST

**ADHESIVE APPLICATOR
FOR USE WITH WIT & WSA ADHESIVES**

**5 GALLON SYSTEM ITEM #5150
55 GALLON SYSTEM ITEM #5155**

The Super Sprayfast is an air powered adhesive spray system designed for use with 5 gallon or 55 gallon containers of water based adhesives. The Super Sprayfast incorporates an Acetal / Teflon diaphragm pump, circulating system and surge tank. It requires 60-70 PSI



GBAC

**ADHESIVE APPLICATOR
FOR USE WITH WSA & WIT ADHESIVES
L TO R FLOW ITEM #39171
R TO L FLOW ITEM #39250**

The GBAC applies Duro Dyne WIT or WSA water base adhesive to insulation in preparation for application to sheet metal. It requires 110v service fused for 15 amps. A source of air is required. Specify the direction of work flow when ordering.



WIT

INSULATION ADHESIVE - ITEM #5056

Water-based Insulation Adhesive specifically designed for Spray, Roller and Brush application. WIT is white in color when applied but dries clear for a clean look. WIT features good wet tack, is non-flammable both in the wet and dry state and is classified by UL (file#R5286). Available in 1 gallon pails, 5 gallon pails and 55 gallon drums.

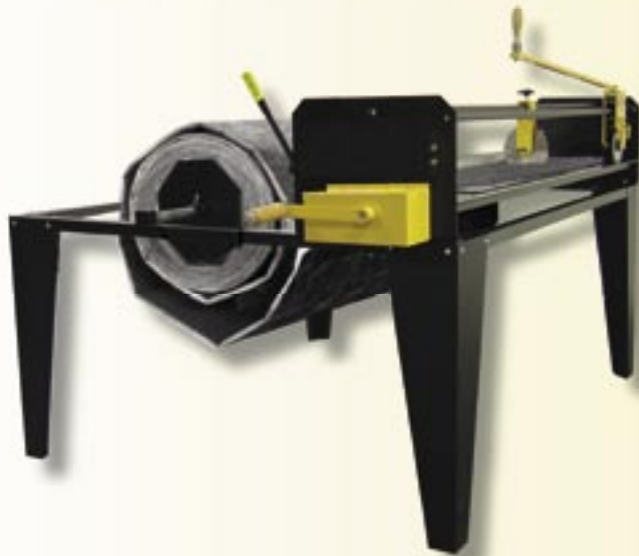
INSULATION CUTTERS



LSU

LINER SIZER
FOR USE WITH 1/2" TO 2" LINER
ITEM# 28076

Duro Dyne's LSU Advanced Liner Sizer is an enhanced version of the popular Model LS5 making it capable of cutting the new cotton fiber insulations, filter media and rubberized products. The cross cut and slitter blades are mechanically gear driven to spin while cutting. This spinning action shears the material to create precise cuts in the most difficult materials.



LS-5

LINER SIZER
FOR USE WITH 1/2" TO 2" LINER
ITEM# 28075

The LS5 is a manual insulation cutter that slits fiberglass insulation to length and width. The operator feeds the insulation with a crank handle to the desired length. An adjustable slitter blade automatically cuts to desired width. The operator then pulls the crosscut blade across the machine and removes the sized insulation.



PLS

AUTOMATIC INSULATION CUTTER
FOR USE WITH 1/2" TO 2" LINER
L TO R FLOW - ITEM#39075
R TO L FLOW - ITEM#39251

**L TO R
SHOWN**

The PLS is used for production line cutting of fiberglass insulation. An electric eye controls the fully automatic "run-out" and the cutting of the insulation. It requires 110v power service fused for 15 amps. A source of air is required. Specify the direction of work flow when ordering.

INSTALLATION MACHINES



LF 1000/2000 LN

HAND HELD PINSPOTTER
110 VOLT - ITEM# 27003
220 VOLT - ITEM# 27004

The LF is a portable unit (9 lbs.) that welds 14 gauge PN style pins to ductwork up to 22 gauge. Insert PN Pin into the magnetic tip and depress the trigger. A timed burst of electricity fuses the pin to the steel. It can also weld LN style pins up to 5-1/2" long with the use of a TPL2 tip purchased separately. Available in 110v & 220v, 50 to 60hz; fuse for 15 amps.



MF-12

COMPACT PINSPOTTER
FOR USE WITH 1/2", 3/4" & 1" WELD PINS
ITEM #27115

The MF-12 welds BDEP, CTC, SSP, CP, FTC, PN or LN type fasteners to ductwork up to 24 Gauge. It requires 220 Volt, 50 to 60 hz service fused for 30 Amps. Place a pin on the magnetic tip. Insert the pin through the insulation, give the pin a 1/4 twist, and depress the trigger switch. For LN type fasteners use a TPL2 tip. For PN type fasteners use a TP2 tip.



PBF-510

HEAVY DUTY PINSPOTTER FOR
FOR USE WITH 1/2" TO 2" WELD PINS
ITEM#27372

The PBF-510 welds BDEP, CTC, SSP, CP, FTC, PN or LN type fasteners to ductwork up to 18 gauge. It requires 220 Volt, 50 to 60 hz service fused for 100 Amps. Place a pin on the magnetic tip, insert the pin through the insulation, give the pin a 1/4 twist and depress the trigger switch. For LN type fasteners use a TPL2 tip. For PN type fasteners use a TP2 tip.

INSTALLATION MACHINES



FG MACH I & II

**MACH I & MACH II AUTOMATIC BULK FEED
PINSPOTTER WITH FIVE FOOT THROAT
ITEM #18001 & #18002**

The FG MACH I & II welds BDEP, CTC, SSP, CP & FTC type fasteners. The FG MACH I can weld to ductwork up to 20 gauge. It requires 220v, 50 to 60hz; service fused for 30 amps. The FG MACH II can weld to ductwork up to 18 gauge. It requires 220v, 50 to 60hz service, fused for 100 amps. A source of 85 P.S.I. air is required for both. Footswitch actuated, fasteners are inserted through the insulation and welded in place.



RH MACH II

**ROLLING HEAD AUTOMATIC PINSPOTTER
ITEM #18010**

RH MACH II welds BDEP, CTC, SSP, CP & FTC type fasteners to ductwork up to 18 gauge. It requires 220v, 50 to 60hz service, fused for 100 amps. A source of 85 P.S.I. air is required. Position a fastener over the insulation and depress the trigger switch. The machine inserts the fastener through the insulation and welds it to the steel.



AB-5

**AUTOMATIC BANGER SETTER
FOR USE WITH 1/2" TO 1-1/2" TRIPOD OR
STANDARD BANGERS
ITEM #17297**

An AB-5 installs Banger Type Fasteners (Tripod & Standard) in ductwork 26 to 18 gauge. It requires 110 Volt, 50 to 60 hz service fused for 15 Amps. A source of 85 P.S.I. air is required. The footswitch is depressed, and the machine inserts a fastener through the insulation and into the steel.

EST: 2-28-05

POWER IN



* CONFIG-B
AS SHOWN FOR MODELS
WITH RELAY/BASE ASSY

P/S-100-RED
CONTACTOR-1(123)-WHT
VIBRATOR CONTROLS
POWER SWITCH(24)
TR #20-RED

WHITE JUMPER (100)
BLK-2(2-11)
BLK-CONTACTOR-1(11)
RELAY-3
BLK-VIBRATOR CONTROLS
(LAMP FLUO)
WHT/BLK
WHT-RED/WHT-TR
TRACK
SECTION

CONTACTOR-1

02/T1 3/A10
RELAY-1
01/L1 4/A20

02/T1 3/A10
RELAY-2
01/L1 4/A20

* CONFIG-B
TIME
DELAY
PC BD

TB
30 BLK
29 RED
28 RED
27 RED
26 RED
25 BLK
YEL BAND
WHT BAND
RED BAND
BLUE BAND

24V
TRAN-2
WHT WHT
RED
24 23 22 21 20
L RED-RET



© 2006 Duro Dyne Corp.
Printed in USA 04/06
88026402



Duro Dyne East Division, Bay Shore, NY 631-249-9000 Fax:631-249-8346
Duro Dyne Midwest Division, Fairfield, OH 513-870-6000 Fax:513-870-6005
Duro Dyne West Division, Santa Fe Springs, CA 562-926-1774 Fax:562-926-5778
Duro Dyne Canada, Lachine, Quebec, Canada 514-422-9760 Fax:514-636-0328
www.durodyne.com E-mail: durodyne@durodyne.com

* CONFIG-B
AS SHOWN FOR MODELS